



IP Finder - IPF-N2 User Guide

This IP Finder apply to, supported camera models:

BC-9-4K12S-S6MN/B, Part Number: 9101E001 or 01070470
BC-9-4K12S-S6MN/W, Part Number: 9101E002 or 01070471
BC-9-4K12S-S3MN/B, Part Number: 9101E003 or 01070470A2
BC-9-4K12S-S3MN/W, Part Number: 9101E004 or 01070471A1
BC-7-4K20S-S6MNB/W, Part Number: 7104E004 or 01070492A1
BC-7-4K20S-S6MNB/B, Part Number: 7104E003 or 01070492
BC-7-4K20S-S3MNB/W, Part Number: 7104E002 or 01070492A3
BC-7-4K20S-S3MNB/B, Part Number: 7104E001 or 01070492A2
VCC-7-4K20S-3SMNB W, Part Number: 7103E003 or 01070466
VCC-7-4K20S-3SMNB B, Part Number: 7103E001 or 01070436
VCC-7HD30S-3SMN/B, Part Number: 7101E001 or 01070493A4
VCC-7HD30S-3SMN/W, Part Number: 7101E002 or 01070493A5
SD530SHD-S-RSN2PW, Part Number: S102E004 or 01090402A1
SD530SHD-B-RSN2PW, Part Number: S102E001 or 01090402A2
SD530SHD-B-RSN2PW, Part Number: S102E003
EX1030SHD-B-LSN2P1, Part Number: E105E001 or 01030135A4

Use this IP Finder as the Camera IP Search Tool to search for cameras on the network. This software will check for the IP address and other essential information. Basic settings can be adjusted using this software, such as IP address change, and a forgot password feature.

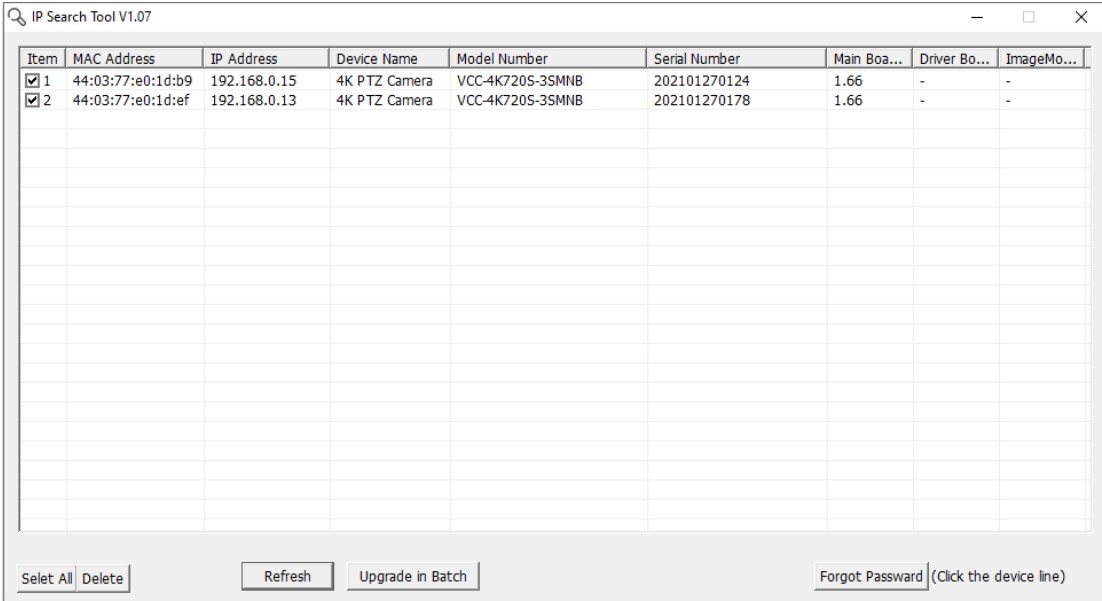
Before using this IP Search Tool, you need to connect the camera to a PC/laptop directly with a network cable, or to a network switch. The camera needs to be powered on and connected properly for the software to detect it.

Guidelines for use

1. Open the IP Search Tool file folder, double click **IPSearch.exe** to running the tool.

ARNET_SDKLOG	2021/3/3 10:34	File folder	
AR.dll	2019/3/20 17:26	Application exten...	481 KB
ARCL.dll	2019/3/20 17:26	Application exten...	376 KB
ARNET_SDK.dll	2019/3/20 17:26	Application exten...	543 KB
avcodec-58.dll	2019/3/20 17:26	Application exten...	1,697 KB
avformat.dll	2019/3/20 17:26	Application exten...	479 KB
avutil-56.dll	2019/3/20 17:26	Application exten...	545 KB
GSFoundation.dll	2019/3/20 17:26	Application exten...	278 KB
GSUtil.dll	2019/3/20 17:26	Application exten...	443 KB
IPSearch.exe	2019/12/24 20:16	Application	451 KB
IPSearch.exe.manifest	2019/12/24 20:11	MANIFEST File	1 KB
IPSearch.pdb	2019/12/24 20:16	PDB File	7,259 KB
NVDDec.dll	2019/3/20 17:26	Application exten...	191 KB
swscale-5.dll	2019/3/20 17:26	Application exten...	505 KB
XPlay.dll	2019/3/20 20:09	Application exten...	740 KB
xplay.ini	2019/3/20 17:26	Configuration sett...	1 KB
zlib1.dll	2019/3/20 17:26	Application exten...	74 KB

2. You will get the camera list automatically.



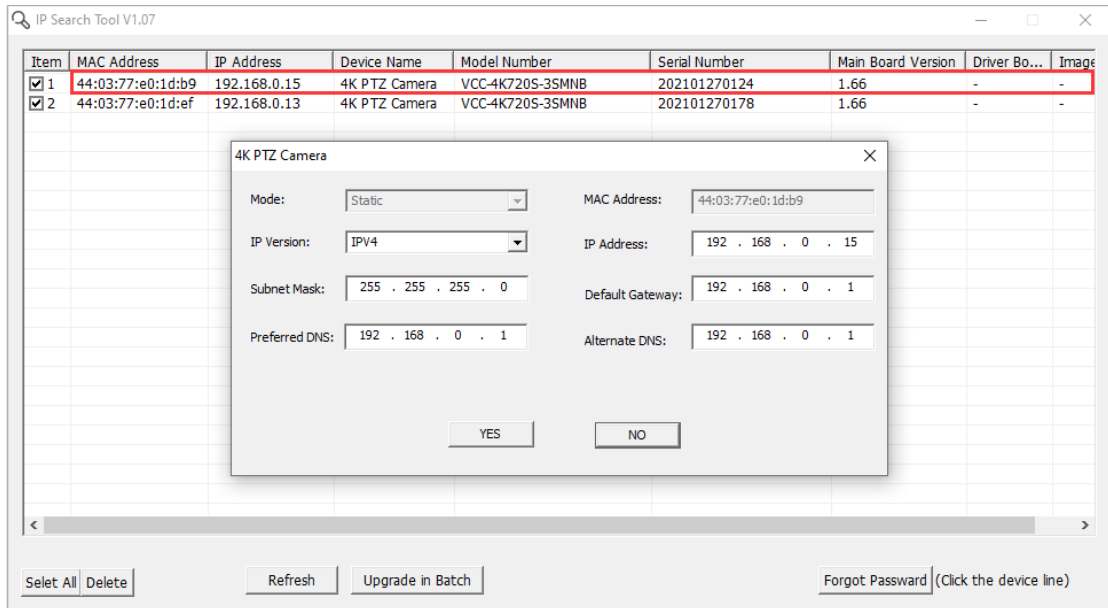
The screenshot shows the IP Search Tool V1.07 interface. It features a table with columns for Item, MAC Address, IP Address, Device Name, Model Number, Serial Number, Main Boa..., Driver Bo..., and ImageMo... The table contains two rows of data, both of which are checked. Below the table, there are buttons for 'Selet All', 'Delete', 'Refresh', 'Upgrade in Batch', and 'Forgot Passward (Click the device line)'.

Item	MAC Address	IP Address	Device Name	Model Number	Serial Number	Main Boa...	Driver Bo...	ImageMo...
<input checked="" type="checkbox"/> 1	44:03:77:e0:1d:b9	192.168.0.15	4K PTZ Camera	VCC-4K720S-3SMNB	202101270124	1.66	-	-
<input checked="" type="checkbox"/> 2	44:03:77:e0:1d:ef	192.168.0.13	4K PTZ Camera	VCC-4K720S-3SMNB	202101270178	1.66	-	-

3. If there is no camera listed by the tool, click the **Refresh** button. Contact your network administrator if you believe there may be security in place preventing the software from having enough permission to operate properly.
4. With the tool, you can get the camera information, such as MAC address, IP address, Model number, as well as IP firmware version.

Change camera IP address

Double click the device line, the IP configuration page will pop up, as shown in the picture below. The IP address can be changed here.



NOTE:

- After changing the IP address, please wait 20 seconds for it to take effect, then to click **Refresh** button to refresh the list, the camera should now be listed with the new IP address.
- The IP address can also be changed via the camera's IP web interface

Forgot password

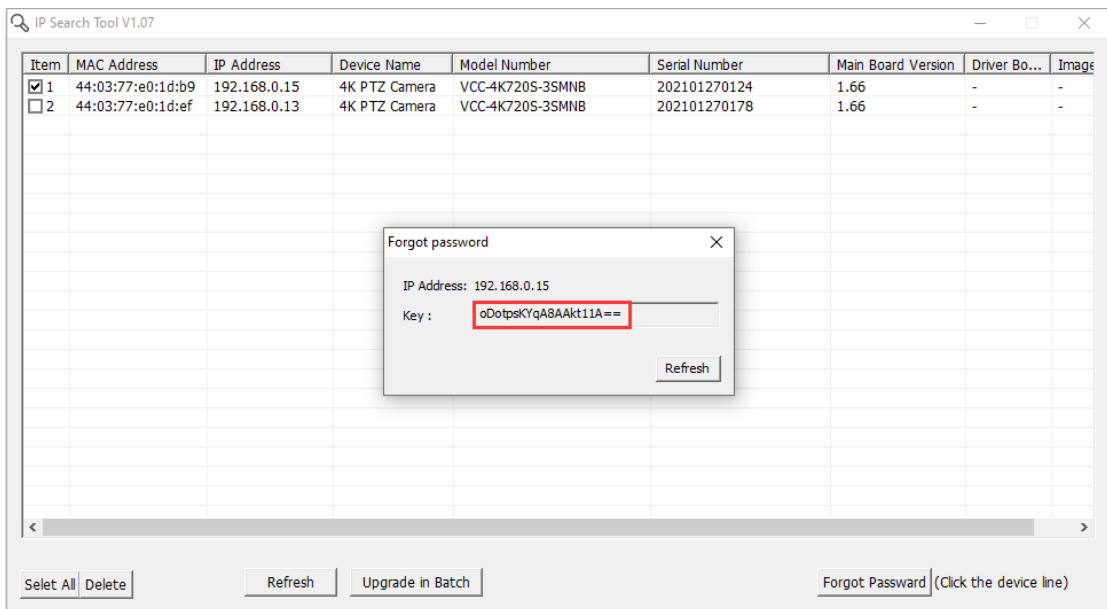
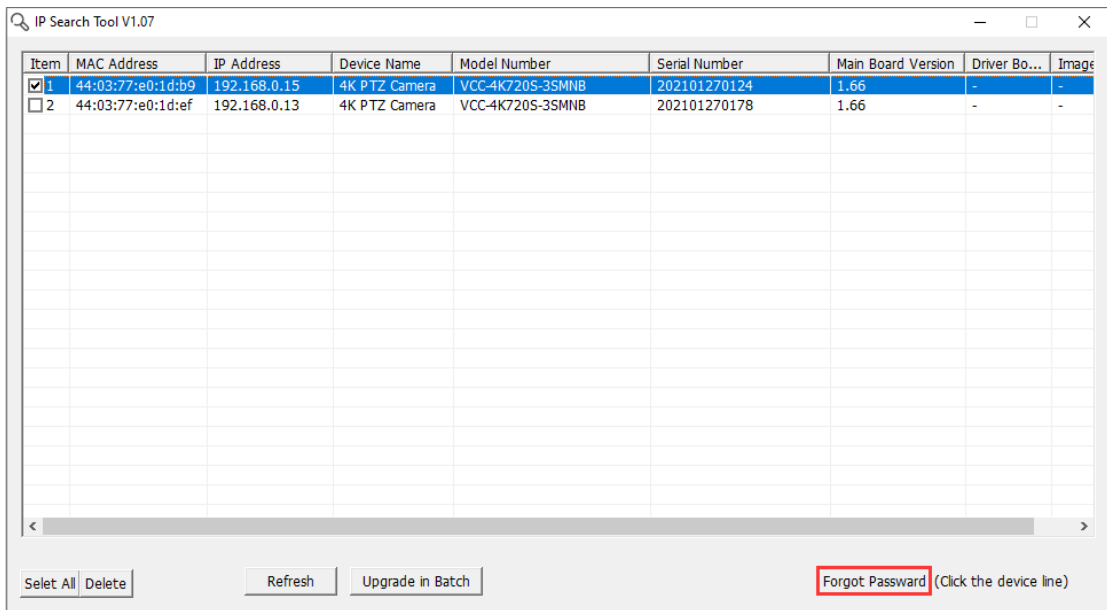
A Key can be generated through this IP Search tool should the password of a camera be forgotten. Please send the Key code to a Bolin technical support engineer, and they will provide a temporary password for login.

NOTE:

- The temporary password can only be used once, it will become invalid after use.
- Please DO NOT power off the camera until after using the temporary password for login and assigning a new password, otherwise, the temporary password provided based on the Key code will become invalid.

Steps for getting the Key code:

- Find the camera which needs password reset and click the device line, it will turn to blue color.
- Click **Forgot Password** button located at the bottom right.
- You will get the Key code in a pop-up window.
- Copy this Key code and send it to a Bolin technical support engineer.



Once a temporary password is received from a Bolin technical support engineer, please login to the camera's IP web interface with the account credentials below.

- Username: **sadmin**
- Password: <the temporary password>

After using the temporary password to login and change the password, the sadmin and temporary password will become invalid. Please login again with admin and the newly assigned password.

NOTE:

- The Upgrade function of the IP Search Tool has not been activated. Please login to the camera IP web interface to do IP firmware upgrade(s).
- For instructions on how to perform IP firmware upgrade, please refer to camera User Manual Part 2.